



## IMMIGRATION AND WELFARE SERVICE CORP

**IMMIGRATION AND WELFARE SERVICE CORP:** Building teams, experts, and fields of study that focus on advocacy, enculturation, outreach, services, and well-being with regards to extraterrestrial visitors.

**KNOWLEDGE:** Immigration and Welfare is an interdisciplinary field, that focuses on the governance of social conditions with regards to the cultures, paradigms, actors, institutions and processes that are associated with meeting the basic needs of nutrition, health, education, shelter, and protection from the main risks that threaten lives.

**CONCERNS AND ISSUES:** The societal signature pattern of beliefs, behavior, and social institutions and how these patterns compare and contrast to those of other cultural groups will be a driving force between needs and desires.

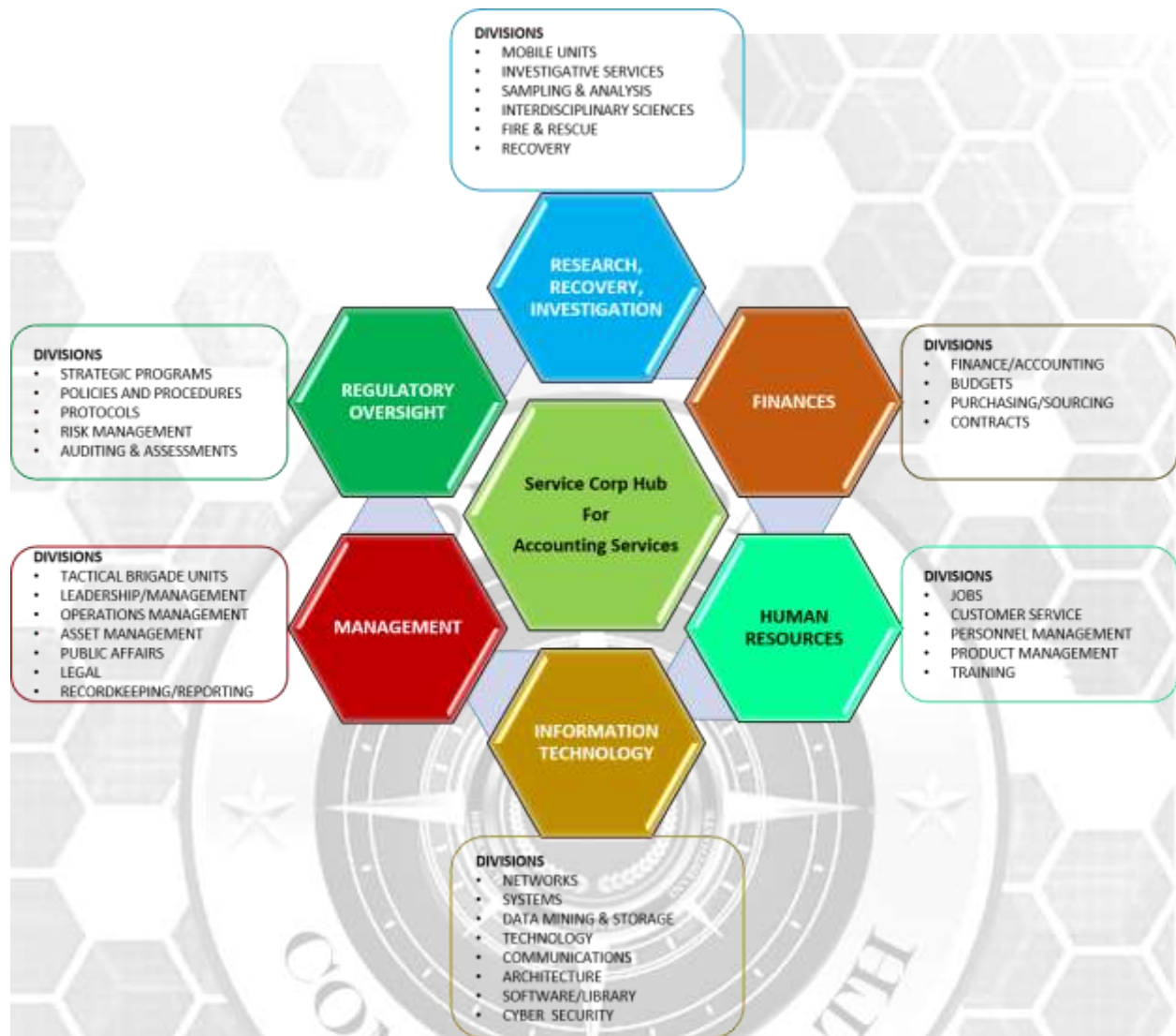
**ASTROCONSTRUCTIVISM DISCIPLINE:** Addressing challenges, barriers, and unknown subject matter will not be solved by one discipline alone. It will require the integration of knowledge, methods and expertise from across astroconstructivism to solve troublesome problems, especially those focusing on societal needs. It has seven primary characteristics:

- Knowledge is constructed. This is the basic principle, meaning that knowledge is built upon other knowledge.
- Extraterrestrials and people in general learn to learn, as they learn. Learning involves constructing meaning and systems of meaning.
- Learning is an active process. Learning involves sensory input to construct meaning. The learner needs to do something in order to learn, it's not a passive activity. Learners need to engage in the world.
- Learning is a social activity. Learning is directly associated to our connection with other people, places, and things.
- Learning is contextual. Learning is being connected to the things going on around us.
- Knowledge is personal, just as education will all be very different and personal.
- Learning exists in the mind. Engaging the mind is key to successful learning.

DISCIPLINE	SCOPE
ADVOCACY	The Immigration and Welfare Advocacy Program provides processes, procedures, and resources for active support of individuals with basic needs of nutrition, health, education, shelter, and protection as they attend to business with Omicron Commonwealth. The aims of advocacy are to create or change policies, laws, regulations, distribution of resources or other decisions that affect lives and to ensure that such decisions lead to implementation and success.
ENCULTURATION	Enculturation involves more than just intellectual aspects; it also involves constructing identities, learning cultural jargon, behaviors,

	and norms of a new species, and understanding its belief systems to identify cultural and potentials of communication across interstellar distances between intelligence species.
OUTREACH	Providing continuing education resources and systems with respect to multiculturalism and diversity, social justice, social change, behavioral and social science theory/research, and social work relevant to education, promotion, prevention, treatment, and rehabilitation programs and services.
SERVICES	<p>A range of programs and service networks that collaborate in helping all individuals become self-sufficient in multiple ways, from connecting them with resources to the acquisition of new skills. Including, but not limited to:</p> <ul style="list-style-type: none"> <li>• <b>Food assistance:</b> Provides stipends to support people in need of food.</li> <li>• <b>Housing assistance:</b> Provides shelter for those who have a qualified need.</li> <li>• <b>Disability assistance:</b> Ensures benefits and resources for qualified medical conditions.</li> <li>• <b>Income assistance:</b> Offers financial stipend to those who have not connected or aligned with work that are not Omicron Commonwealth members.</li> <li>• <b>Education assistance:</b> Provides educational resources to those in need that are not Omicron Commonwealth members.</li> <li>• <b>Mental health assistance:</b> Offers counseling and psychologist services to those who are struggling with various mental challenges.</li> </ul>
WELL-BEING	<p>Providing subjective wellbeing, psychological wellbeing, and social wellbeing programs to include:</p> <p>Social bonds with partners and friends to influence health habits and behaviors, which influence health and longevity.</p> <p>Social support to reduce stress and enhance emotional and psychological wellbeing, positively influencing health behaviors and physical health.</p> <p>and</p> <p>Positive relationships to boost cardiovascular, immune, and endocrine responses, which can affect longevity and health in the long run.</p>

At the Center of each Service Corp is the Service Corp Hub for Accounting Services. These services are the measurement, processing, communication, and economic activities of financial and non-financial information, and the language of business synchronously linked throughout the Service Corps and Omicron Commonwealth.



COMMONWEALTH