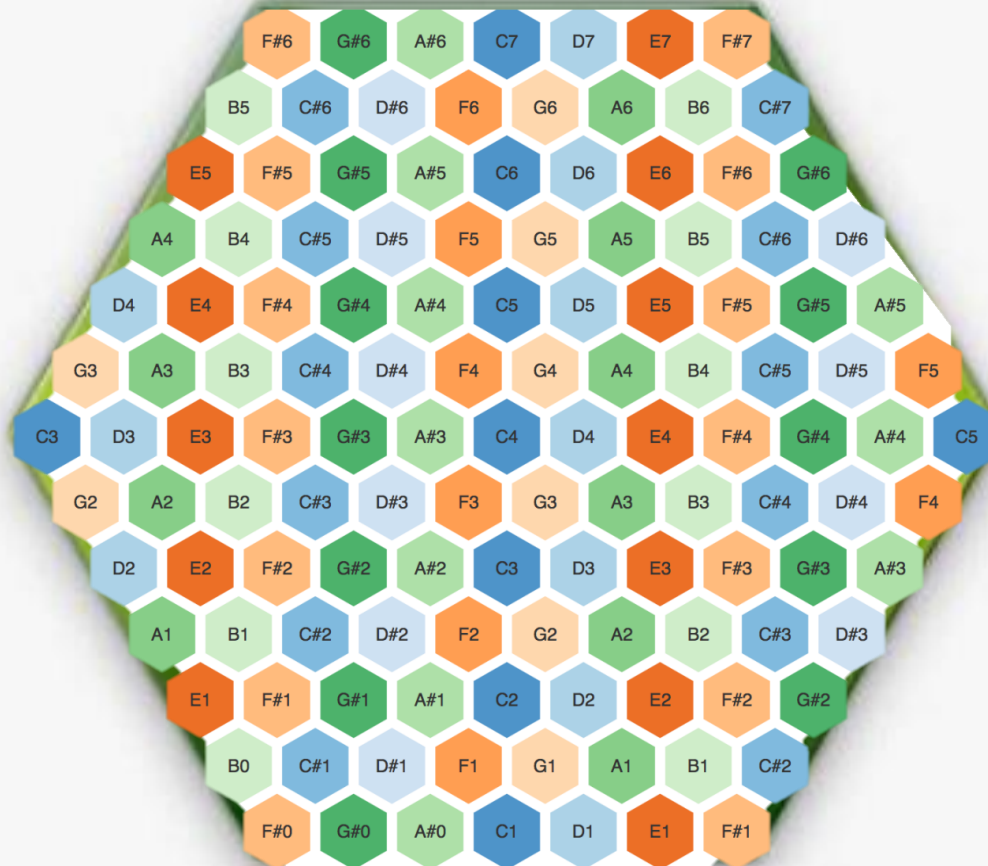


Hexatecture

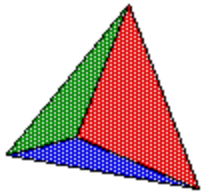
The hexatonic scale is a scale with six pitches or notes per octave. Famous examples include the whole-tone scale, C D E F $\sharp$  G $\sharp$  A $\sharp$  C; the augmented scale, C D $\sharp$  E G A $\flat$  B C; the Prometheus scale, C D E F $\sharp$  A B $\flat$  C; and the blues scale, C E $\flat$  F G $\flat$  G B $\flat$  C. A hexatonic scale can also be formed by stacking perfect fifths. This results in a diatonic scale with one note removed (for example, A C D E F G).

The major hexatonic scale is made from a major scale and removing the seventh note, e.g., C D E F G A C.<sup>[1]</sup> It can also be made from superimposing mutually exclusive triads, e.g., C E G and D F A. Similarly, the minor hexatonic scale is made from a minor scale by removing the sixth note, e.g., C D E $\flat$  F G B $\flat$  C.

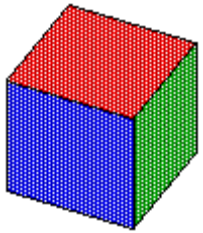


Mode	I	II	III	IV	V	VI
Name	Major hexatonic	Minor hexatonic	Ritsu Onkai	Raga Kumud	Mixolydian hexatonic	Phrygian hexatonic
Notes	1 2 3 4 5 6	1 2 $\flat$ 3 4 5 $\flat$ 7	1 $\flat$ 2 $\flat$ 3 4 $\flat$ 6 $\flat$ 7	1 2 3 5 6 7	1 2 4 5 6 $\flat$ 7	1 $\flat$ 3 4 5 $\flat$ 6 $\flat$ 7
Based on modes	•Ionian •Mixolydian	•Dorian •Aeolian	•Phrygian •Locrian	•Lydian •Ionian	•Mixolydian •Dorian	•Aeolian •Phrygian
Omitted note	7	6	5	4	3	2

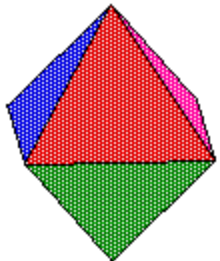
Inspiration and Transformation - Metatron represents the flow of energy, which contains all of the geometric shapes in creation and represents the patterns that make up everything created and those shapes are the building blocks of all physical matter and the harmony and balance of all nature.



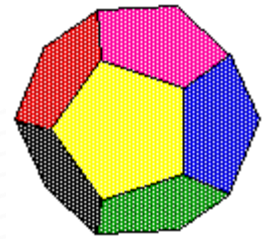
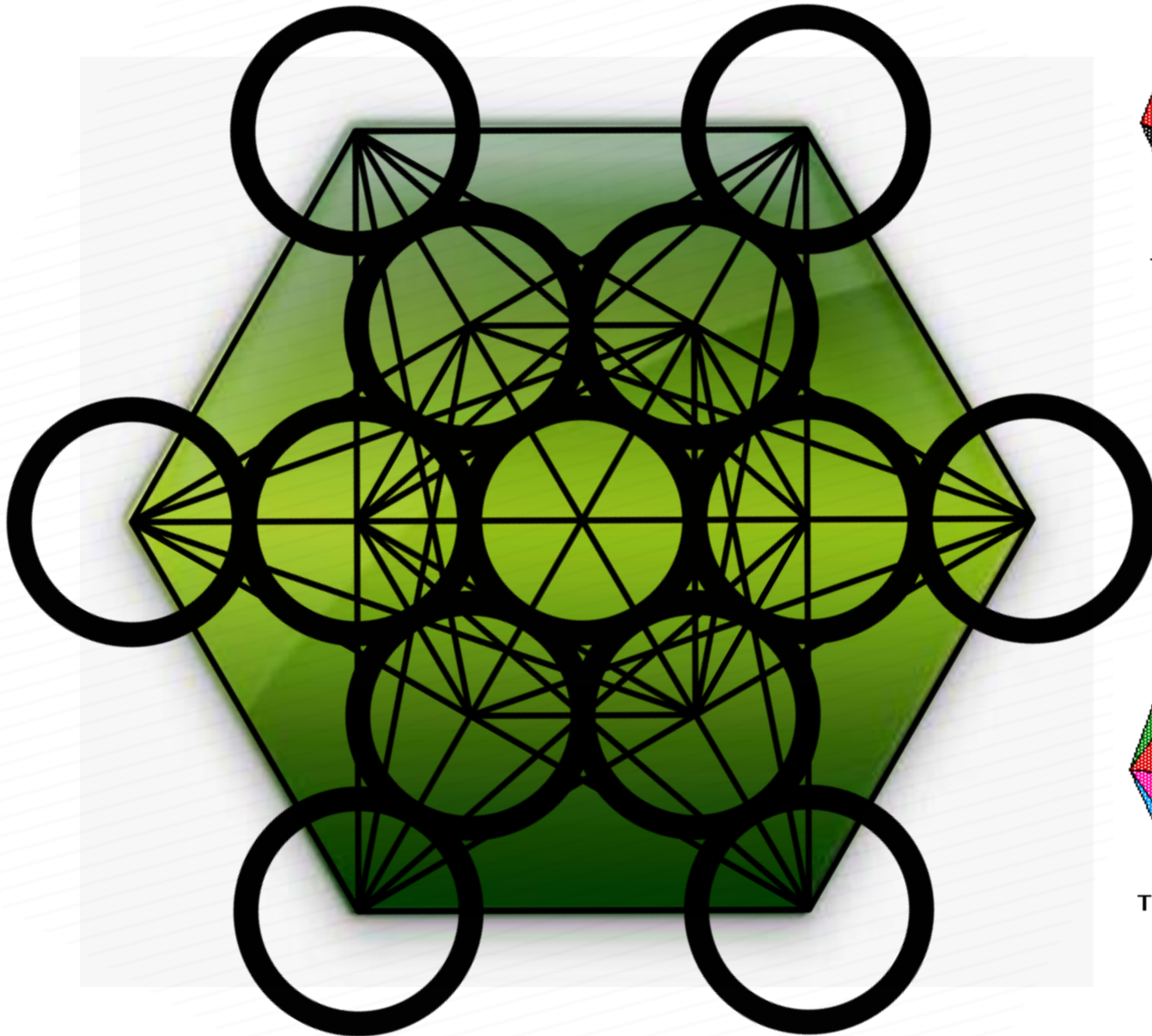
**The Tetrahedron**



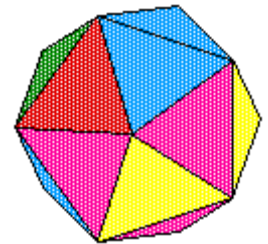
**The Cube**



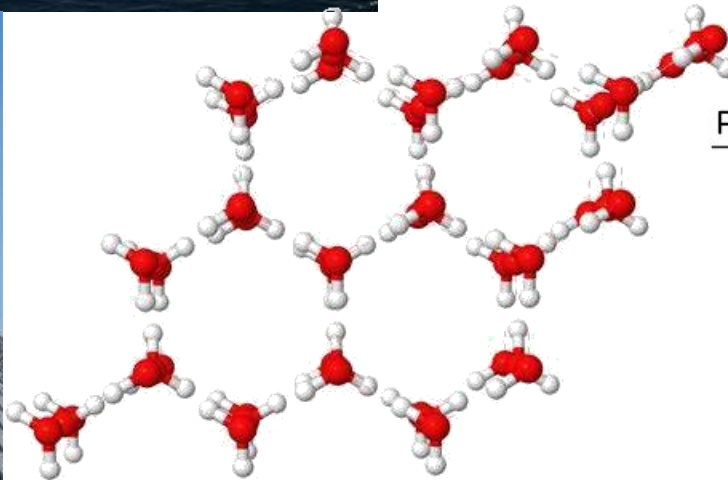
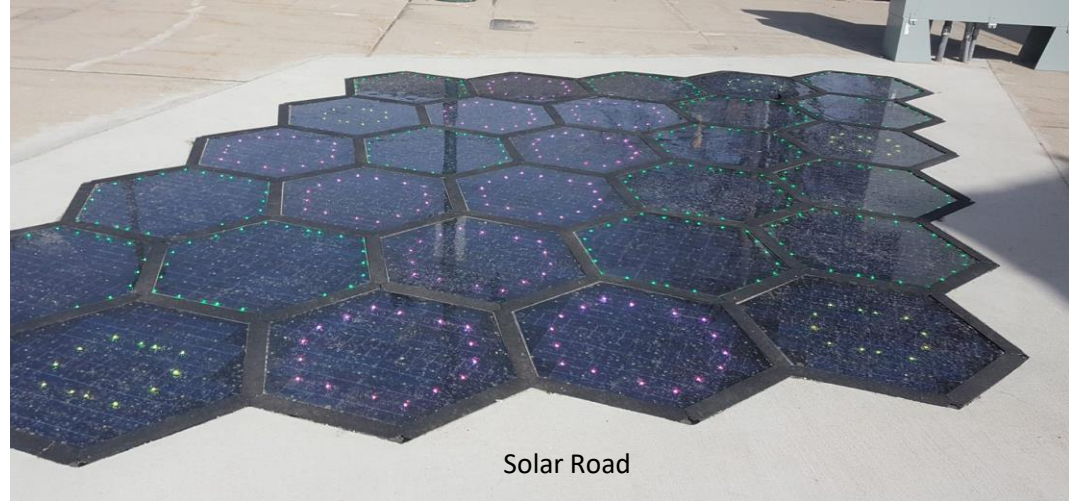
**The Octahedron**



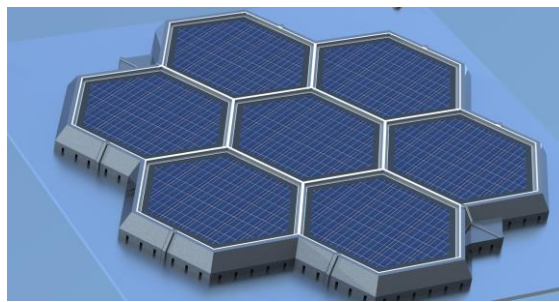
**The Dodecahedron**



**The Icosahedron**



Ionized water and the prevalence of the hexagon in nature

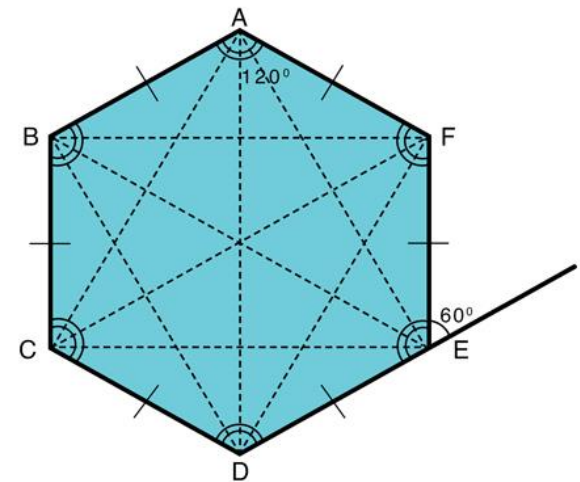


Hexitecture  
Architecture

Solar Tile

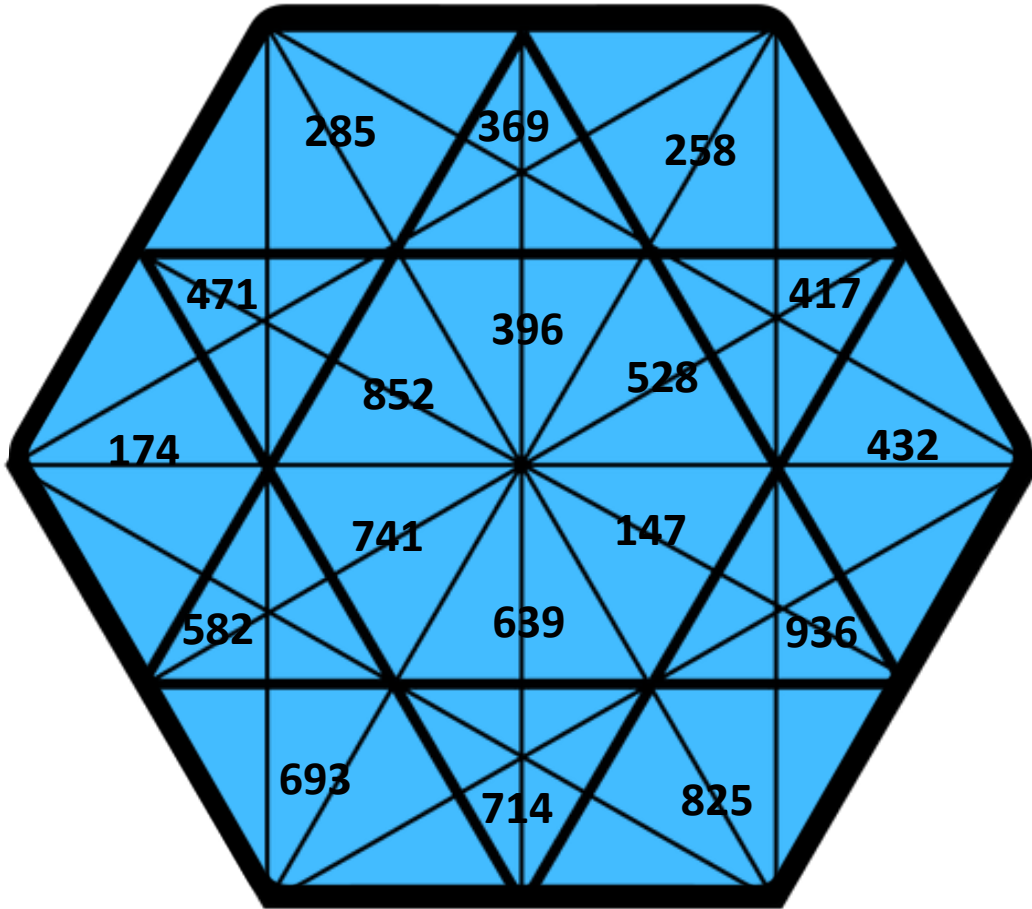
### Properties of a Hexagon

3, 6, 9



- ① All six sides are equal
- ② All six interior angles are equal, measuring  $120^\circ$  each
- ③ The sum of the interior angles is  $720^\circ$
- ④ All six exterior angles are equal, measuring  $60^\circ$  each
- ⑤ Has nine diagonals

# SOLFEGGIO HEXAGONAL



111	123	135	147	158	162	174	186	198	=3
219	222	234	246	258	261	272	285	297	=6
318	321	333	345	357	369	372	384	396	=9
417	429	432	444	456	468	471	483	495	=3
516	528	531	543	555	567	579	582	594	=6
615	627	639	642	654	666	678	681	693	=9
714	726	738	741	753	765	777	789	792	=3
813	825	837	849	852	864	876	888	891	=6
912	924	936	948	952	963	975	987	999	=9
=3	=6	=9	=3	=6	=9	=3	=6	=9	